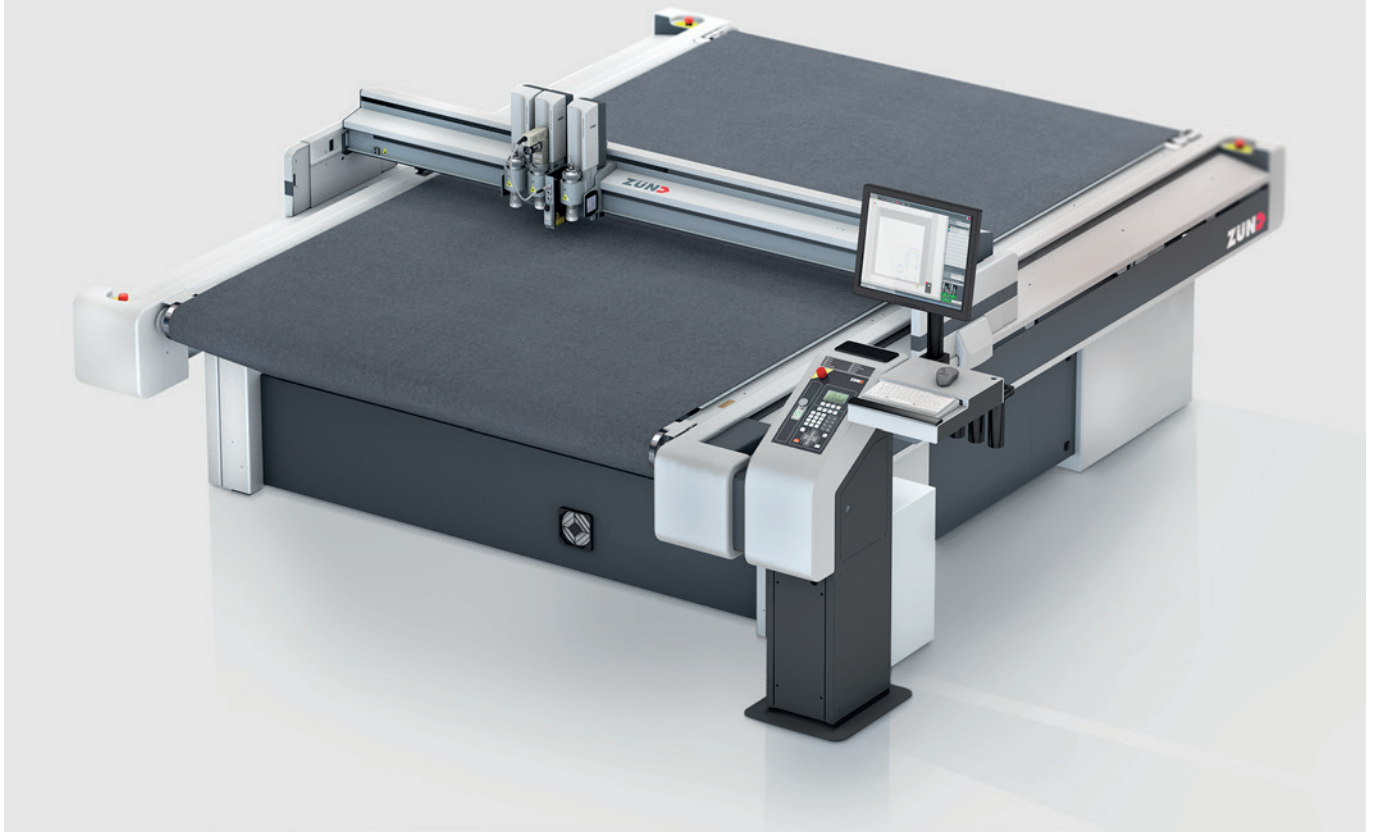


# Technical Data **G3**

## Base machine

Specifications, speed, acceleration



08-2023

### Specifications

repeatability <sup>1)</sup>	± 0,03 mm / ± 0.001"
position accuracy <sup>1)</sup>	± 0,1 mm/m / ± 0.0012"/ft + repeatability
floor load requirements	200 kg/m <sup>2</sup> / 45 lbs/ft <sup>2</sup>
interface	RS232C/V24, Ethernet 10/100Mbit
operating temperature	10-35 °C / 50-95 °F
relative humidity	10-80 % non condensing
noise emission <sup>2)</sup>	< 75 dB(A)
beam height <sup>3)</sup>	30/60/120 mm / 1.1/2.3/4.7"
electrical requirements	AC 3ph+N+GND, 208/400 V, 50/60 Hz, 32 A
max. material weight	30 kg/m <sup>2</sup> / 6 lbs/ft <sup>2</sup> (manual loading) (can affect the evenness of the working surface)

### Speed, acceleration <sup>4)</sup>

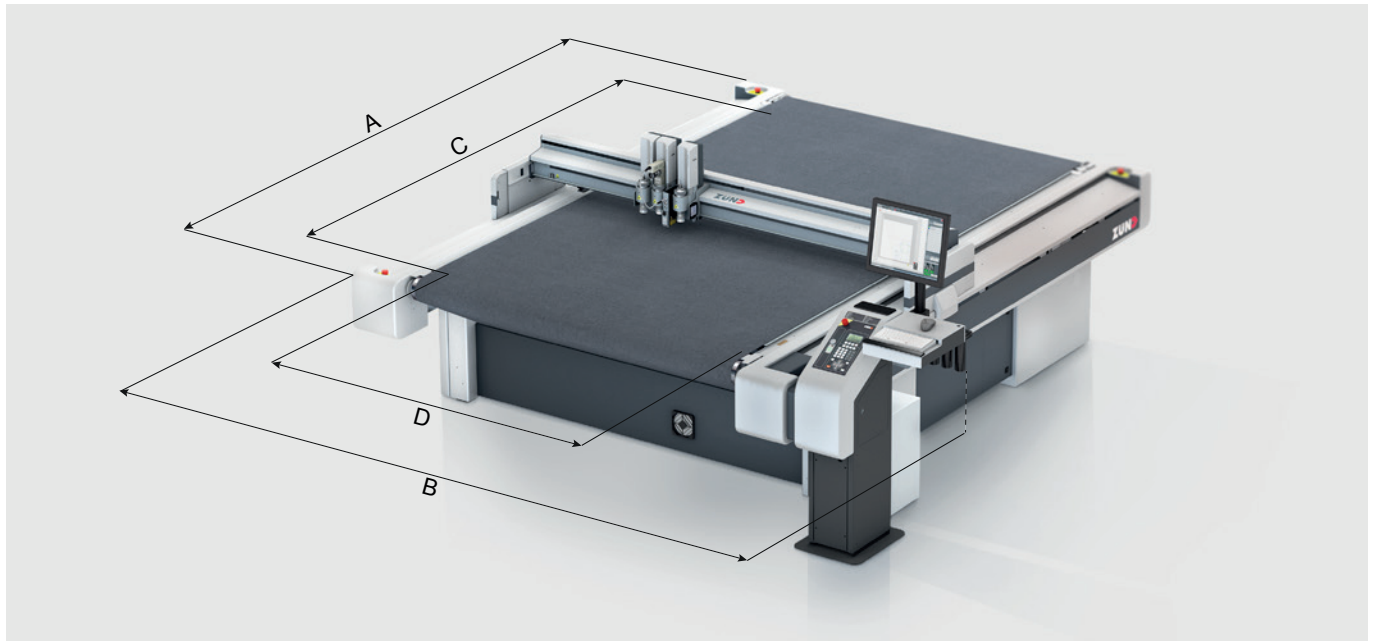
max. speed X/Y-axis	1414 mm/s / 55"/s
max. acceleration X/Y-axis	9,3 m/s <sup>2</sup> / 366"/s <sup>2</sup>
max. speed Z-axis	500 mm/s / 20"/s
max. acceleration Z-axis	10 m/s <sup>2</sup> / 393"/s <sup>2</sup>
max. rotation speed T-axis	44.2 rad/s
max. rotation acceleration T-axis	3068 rad/s <sup>2</sup>

- 1) X/Y drive system, static, at constant operating temperature (may vary depending on cutting tool/method).
- 2) Noise levels may vary between <75 dB(A) and ~85 dB(A) depending on ambient conditions and type of cutting technology, materials, and vacuum generator being used.
- 3) 120 mm / 4,7" beam height available only for cutter sizes L-3200, XL-3200.
- 4) Depending on cutter size, modules.

# Technical Data **G3**

## Base machine

Dimensions, weight, material



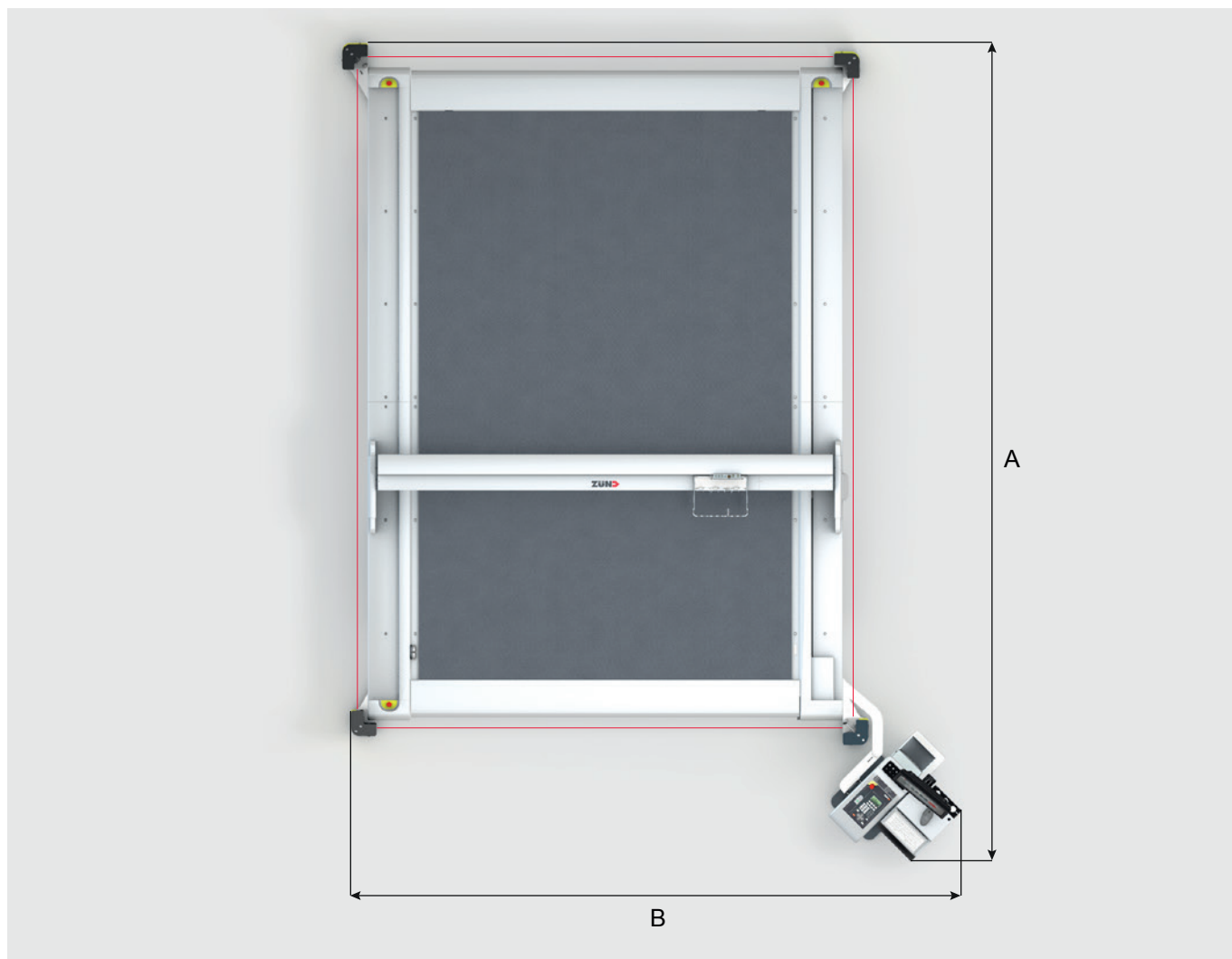
Type	Working area (D x C)	Overall dimensions, incl. workstation (B x A)	Machine weight
<b>M-1600</b>	1330 mm x 1600 mm / 52" x 63"	2830 mm x 2510 mm / 111" x 98"	670 kg / 1480 lbs
<b>M-2500</b>	1330 mm x 2500 mm / 52" x 98"	2830 mm x 3410 mm / 111" x 134"	840 kg / 1855 lbs
<b>L-2500</b>	1800 mm x 2500 mm / 70" x 98"	3300mm x 3410 mm / 130" x 134"	970 kg / 2140 lbs
<b>L-3200</b>	1800 mm x 3200 mm / 70" x 125"	3300 mm x 4110 mm / 130" x 162"	1110 kg / 2450 lbs
<b>XL-1600</b>	2270 mm x 1600 mm / 89" x 63"	3770 mm x 2510 mm / 148" x 98"	890 kg / 1965 lbs
<b>XL-3200</b>	2270 mm x 3200 mm / 89" x 125"	3770 mm x 4110 mm / 148" x 162"	1280 kg / 2825 lbs
<b>2XL-1600</b>	2740 mm x 1600 mm / 107" x 63"	4240 mm x 2510 mm / 167" x 98"	980 kg / 2160 lbs
<b>2XL-3200</b>	2740 mm x 3200 mm / 107" x 125"	4240mm x 4110 mm / 167" x 162"	1420 kg / 3130 lbs
<b>3XL-1600</b>	3210 mm x 1600 mm / 126" x 63"	4710 mm x 2510 mm / 185" x 98"	1120 kg / 2470 lbs
<b>3XL-2500</b>	3210 mm x 2500 mm / 126" x 98"	4710 mm x 3410 mm / 185" x 134"	1430 kg / 3155 lbs
<b>3XL-3200</b>	3210 mm x 3200 mm / 126" x 125"	4710 mm x 4110 mm / 185" x 162"	1610 kg / 3550 lbs

Type	max. materialwidth cutter with static work surface	max. materialwidth cutter with material transport
<b>M-series</b>	1610 mm / 63"	1330 mm / 52"
<b>L-series</b>	2080 mm / 81"	1800 mm / 70"
<b>XL-series</b>	2550 mm / 100"	2270 mm / 89"
<b>2XL-series</b>	3020 mm / 118"	2740 mm / 107"
<b>3XL-series</b>	3490 mm / 137"	3210 mm / 126"

# Technical Data **G3**

## Cutter with light curtain and static work surface

Dimensions, material

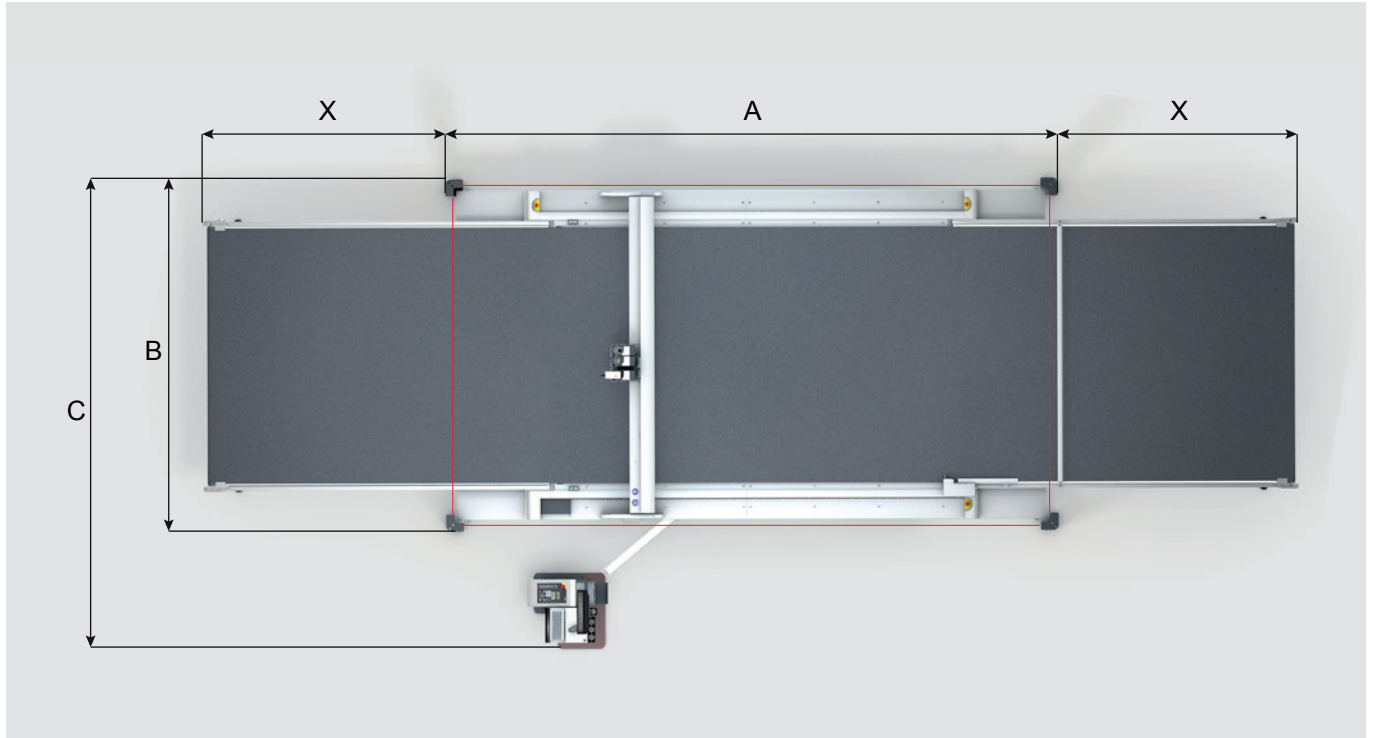


Type	Overall dimensions, incl. workstation (B x A)
M-1600	3080 mm × 3745 mm / 121" × 147"
M-2500	3080 mm × 4645 mm / 121" × 183"
L-2500	3550 mm × 4645 mm / 140" × 183"
L-3200	3550 mm × 5350 mm / 140" × 210"
XL-1600	4020 mm × 3745 mm / 158" × 148"
XL-3200	4020 mm × 5350 mm / 158" × 210"
2XL-1600	4490 mm × 3745 mm / 177" × 148"
2XL-3200	4490 mm × 5345 mm / 177" × 210"
3XL-1600	4960 mm × 3745 mm / 195" × 148"
3XL-2500	4960 mm × 4645 mm / 195" × 183"
3XL-3200	4960 mm × 5345 mm / 195" × 210"

# Technical Data **G3**

## Cutter with light curtain and material transport

Dimensions, material



Type	Overall dimensions (A + 2X) × B	Overall dimensions incl. work- station (A + 2X) × C
<b>M-1600</b>	(3970 mm + 2X) × 2270 mm (156" + 2X) × 89"	(3970 mm + 2X) × 3430 mm (156" + 2X) × 135"
<b>M-2500</b>	(4870 mm + 2X) × 2270 mm (192" + 2X) × 89"	(4870 mm + 2X) × 3430 mm (192" + 2X) × 135"
<b>L-2500</b>	(4870 mm + 2X) × 2740 mm (192" + 2X) × 108"	(4870 mm + 2X) × 3900 mm (192" + 2X) × 154"
<b>L-3200</b>	(5570 mm + 2X) × 2740 mm (219" + 2X) × 108"	(5570 mm + 2X) × 3900 mm (219" + 2X) × 154"
<b>XL-1600</b>	(3970 mm + 2X) × 3210 mm (156" + 2X) × 126"	(3970 mm + 2X) × 4370 mm (156" + 2X) × 170"
<b>XL-3200</b>	(5570 mm + 2X) × 3210 mm (219" + 2X) × 126"	(5570 mm + 2X) × 4370 mm (219" + 2X) × 170"
<b>2XL-1600</b>	(3970 mm + 2X) × 3680 mm (156" + 2X) × 145"	(3970 mm + 2X) × 4840 mm (156" + 2X) × 191"
<b>2XL-3200</b>	(5570 mm + 2X) × 3680 mm (219" + 2X) × 145"	(5570 mm + 2X) × 4840 mm (219" + 2X) × 191"
<b>3XL-1600</b>	(3970 mm + 2X) × 4150 mm (156" + 2X) × 163"	(3970 mm + 2X) × 5310 mm (156" + 2X) × 209"
<b>3XL-2500</b>	(4870 mm + 2X) × 4150 mm (192" + 2X) × 163"	(4870 mm + 2X) × 5310 mm (192" + 2X) × 209"
<b>3XL-3200</b>	(5570 mm + 2X) × 4150 mm (219" + 2X) × 163"	(5570 mm + 2X) × 5310 mm (219" + 2X) × 209"

The length of X varies depending on the used cutter extension.  
Technical data subject to change without notice.