

Driven Rotary Tool - DRT

The Driven Rotary Tool - DRT provides an economical and reliable single-ply cutting method for textiles and industrial fabrics.

Materials suitable for processing with the DRT include woven and non-woven fabrics made from natural or synthetic fiber; coated, printed, or otherwise enhanced or decorated (e.g. embroidered) textiles.

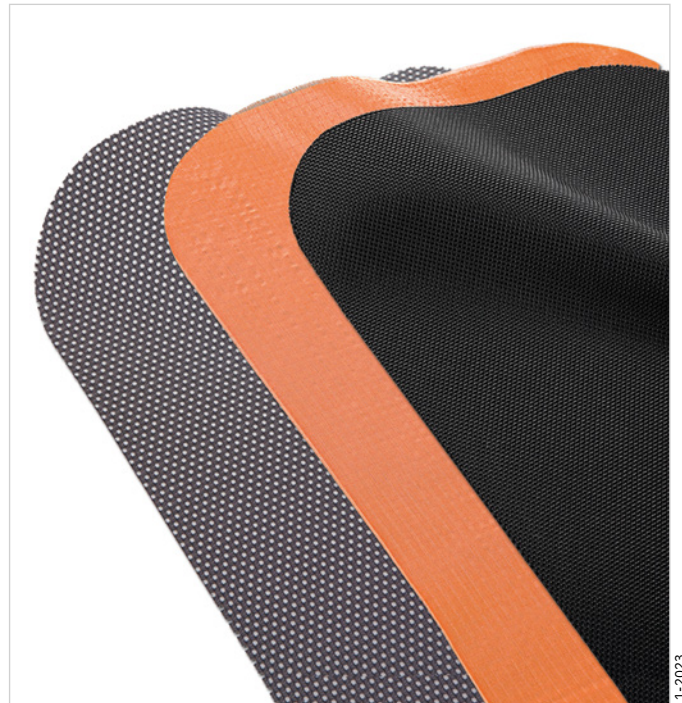
The tool uses a decagonal blade to cut the material. The user can choose between a "low" and "high" RPM setting; the former facilitates cutting of materials with lower melting points.

Cutting textiles with a rotary blade offers advantages over other cutting methods such as oscillating cutting and cutting with a drag knife. First and foremost, the rotary blade produces considerably less drag force on the material, resulting in a clean cut of each individual fiber. Particularly with coarsely woven materials, this is the only way to achieve a precise cut at high cutting speeds. Decagonal blades allow for maximum processing speeds and clean, efficient cutting.

Zünd recommends the following materials for cutting with the DRT:

- Clothing fabrics
- Home textiles (upholstery, bedding, curtains, lampshades, etc.)
- Industrial fabrics (banners, awnings, etc.)

Note: For cutting tougher technical textiles and composites with carbon, glass, or Aramid fiber content, we recommend using the more heavy-duty Power Rotary Tool - PRT.



11-2023

Details

Cutting speeds up to 1000 mm/40" per sec.

Choice of two rotation speeds:

- High: 20,000 RPM
- Low: 12,000 RPM

Accommodates all Zünd rotary blades:

- 3910335, Z50 (Ø 25 mm)
- 3910336, Z51 (Ø 28 mm)
- 3910337, Z52 (Ø 32 mm)

Compatible with **G3**, **S3**, **L3**, **D3**.

Advantages at a glance

High productivity with cutting speeds up to 1000 mm/40" per sec.

High cut quality and precision even with coarsely woven materials (tool prevents moving/skipping of individual fibers).

Ability to process wide range of textiles.

Suitable for single-ply cutting.

Fully supported in Zünd Cut Center software.