

Board Loading Device for cutters with beam height 120 mm

The Board Loading Device enables semi-automatic production. Thick panel materials such as cardboard, twin-wall sheets, or foam are fed manually and precisely aligned with the mechanical guide.

The Board Loading Device allows you to quickly and precisely feed panel material up to thicknesses of 110 mm. The panels are aligned on the mechanical guides on the rear cutter extension in just a few steps. The cutter extension enables the feeding of new material without having to disrupt the process. Loading downtimes are also efficiently reduced in this way.

The material is subsequently transported by way of the conveyor belt to the working area where processing occurs.

The front cutter extension is the eventual unloading area. Waste and final cut parts can be removed there without causing a disruption.

Through predefined job processes, the Zünd Cut Center (ZCC) perfectly supports the Board Loading Device. The combination of cutter extensions, ZCC, and the Board Loading Device is therefore ideal for optimizing panel handling. This results in reduced downtime, increased productivity, and the highest efficiency.

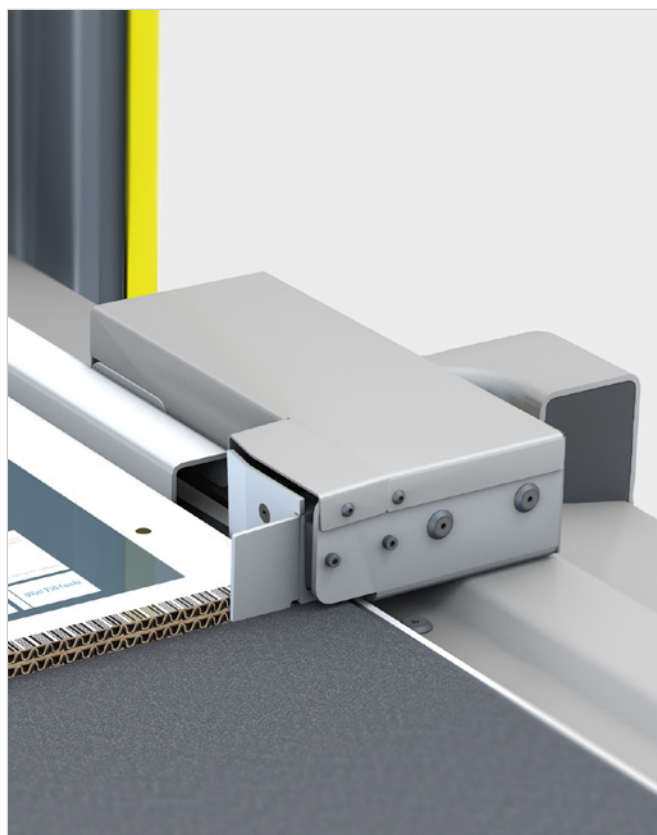


Details

Assembly of the rear cutter extension in the loading area of the cutter.

Maximum feedable panel thickness: 110 mm

Compatible with **G3** machines with 120 mm beam height.



Advantages at a glance

Quick and accurate placement of sheets/boards.

Combination of cutter extensions, Board Loading Device, and ZCC provides a semi-automated workflow.

Reduced idle time and significantly increased productivity compared to non-automated positioning/loading.

Fully supported by Zünd Cut Center.

12/2023